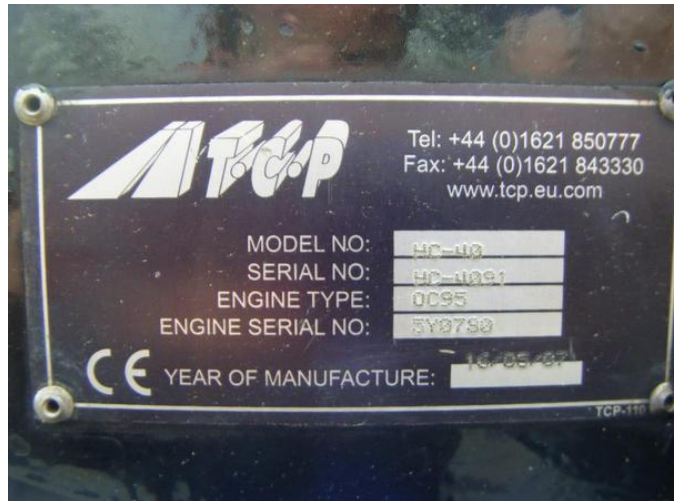


2007 TAYLOR CONSTRUCTION PLANT HI-C40 CRUSHER Diesel [CIF MSA £16,500]



Kubota engine 9 HP | 1400 m Operating Height | Excellent Overall Condition | 1025 Hrs Used | 1,000 kg GVW | 700 m Operating Width | 75% Tyre Condition

2007 TCP HI-C40 MICRO CRUSHER READY TO GO TO WORK. HAS A CRUSHING FORCE OF 60 TONNES AND WILL CRUSH 2.5 TONNE / HOUR. TRACKED AND ALL HYDRAULIC DIESEL/RED OIL. WILL CRUSH ALL MAN MADE AND NATURAL STONE MATERIALS. FULLY SERVICED WITH NEW FUEL PUMP, BODY COMPLETELY REPAINTED LIKE NEW. WILL CRUSH FROM 60MM DOWN TO 20MM WITH ALL FINES BETWEEN. HOPPER SIZE 400MMX400MM.

MORE IMAGES AVAILABLE ON REQUEST